



## REGIONAL SPECIALISED METEOROLOGICAL CENTRE-TROPICAL CYCLONES, NEW DELHI TROPICAL WEATHER OUTLOOK

**DEMS-RSMC TROPICAL CYCLONES NEW DELHI DATED 06.09.2024**

**TROPICAL WEATHER OUTLOOK FOR NORTH INDIAN OCEAN (THE BAY OF BENGAL AND THE ARABIAN SEA) VALID FOR NEXT 168 HOURS ISSUED AT 0600 UTC OF 06.09.2024 BASED ON 0300 UTC OF 06.09.2024.**

### **BAY OF BENGAL:**

YESTERDAY'S LOW PRESSURE AREA OVER COASTAL ANDHRA PRADESH & ADJOINING WESTCENTRAL BAY OF BENGAL MOVED NEARLY EASTWARDS AND LAY OVER CENTRAL AND ADJOINING NORTH BAY OF BENGAL AT 0300 UTC OF TODAY, THE 6TH SEPTEMBER, 2024. THE ASSOCIATED CYCLONIC CIRCULATION EXTENDED UPTO 7.6 KM ABOVE MEAN SEA LEVEL TILTING SOUTHWESTWARDS WITH HEIGHT. IT IS LIKELY TO MOVE SLOWLY NEARLY NORTHWARDS AND INTENSIFY INTO DEPRESSION OVER NORTHWEST BAY OF BENGAL AND ADJOINING AREAS OF GANGETIC WEST BENGAL, NORTH ODISHA AND BANGLADESH COASTS AROUND 9TH SEPTEMBER. THEREAFTER, IT IS LIKELY TO MOVE WEST-NORTHWESTWARDS ACROSS GANGETIC WEST BENGAL AND ADJOINING NORTH ODISHA, JHARKHAND AND ADJOINING NORTH CHHATTISGARH DURING SUBSEQUENT 3 DAYS.

AS PER INSAT-3D IMAGERY, LOW LEVEL CIRCULATION (LLC) LAY OVER CENTRAL ADJOINING NORTHWEST BAY OF BENGAL AND NEIGHBOURHOOD. ASSOCIATED SCATTERED TO BROKEN LOW AND MEDIUM CLOUDS WITH EMBEDDED INTENSE TO VERY INTENSE CONVECTION LAY OVER CENTRAL AND ADJOINING NORTH BAY OF BENGAL. MINIMUM CLOUD TOP TEMPERATURE IS MINUS 80-93 DEGREE CELSIUS.

YESTERDAY'S CYCLONIC CIRCULATION OVER NORTH ANDAMAN SEA & NEIGHBOURHOOD BECAME LESS MARKED OVER THE SAME REGION AT 0300 UTC OF TODAY, THE 5<sup>TH</sup> SEPTEMBER, 2024.

SCATTERED TO BROKEN LOW AND MEDIUM CLOUDS WITH EMBEDDED INTENSE TO VERY INTENSE CONVECTION LAY OVER BAY OF BENGAL, NORTH ANDAMAN SEA AND GULF OF MARTABAN. SCATTERED LOW AND MEDIUM CLOUDS WITH EMBEDDED MODERATE TO INTENSE CONVECTION LAY OVER SOUTH ANDAMAN SEA.

**\*PROBABILITY OF CYCLOGENESIS (FORMATION OF DEPRESSION) DURING NEXT 168 HRS:**

24 HOURS	24-48 HOURS	48-72 HOURS	72-96 HOURS	96-120 HOURS	120-144 HOURS	144-168 HOURS
NIL	NIL	NIL	LOW	MOD	MOD	NIL

**\*NOTE: EVERY 24HR FORECAST IS VALID UPTO 0300 UTC (0830 IST) OF NEXT DAY**

**ARABIAN SEA:**

SCATTERED LOW AND MEDIUM CLOUDS WITH EMBEDDED ISOLATED WEAK TO MODERATE CONVECTION LAY OVER ARABIAN SEA, LAKSHADWEEP ISLANDS AREA AND COMORIN AREA.

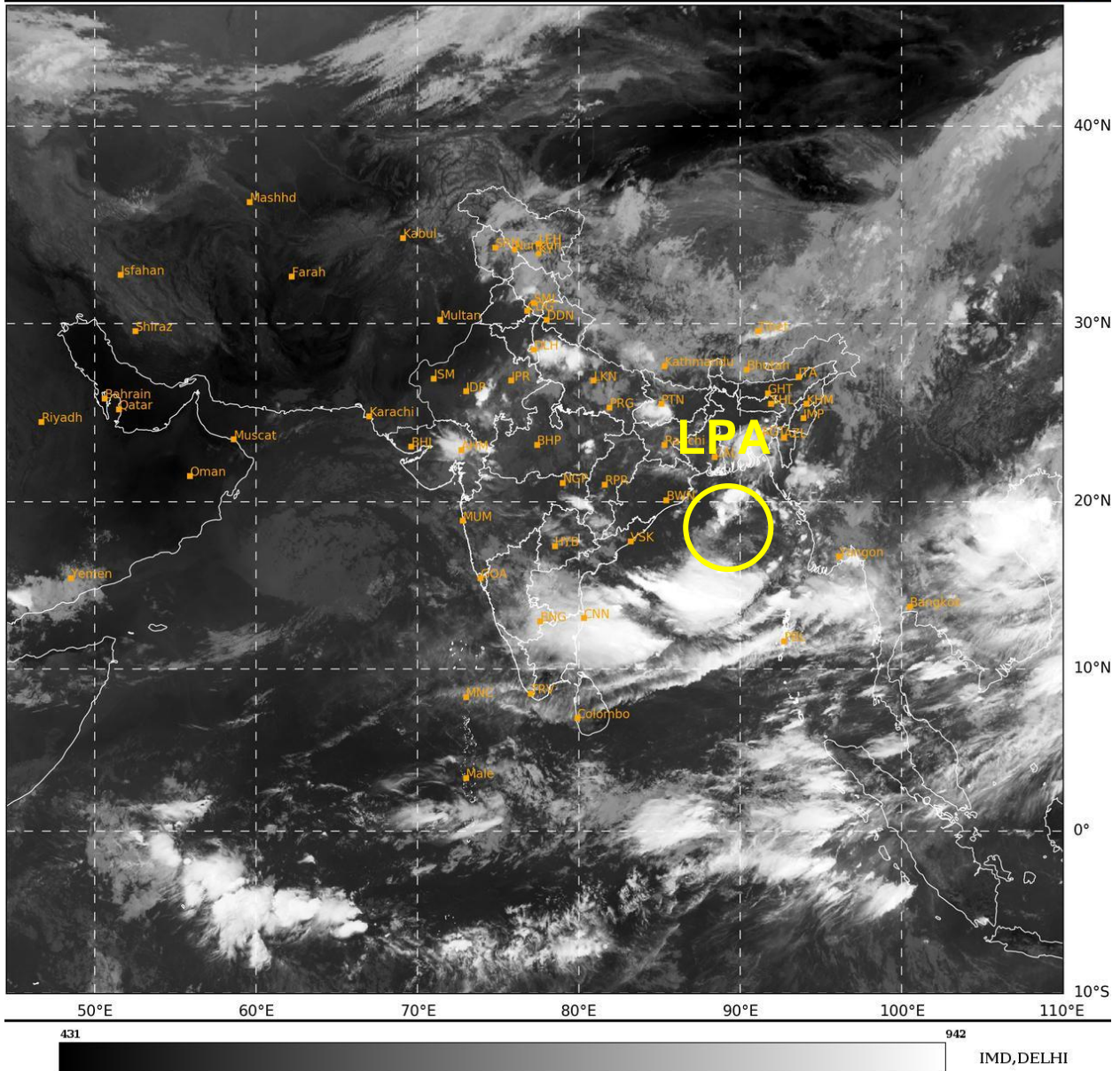
**\*PROBABILITY OF CYCLOGENESIS (FORMATION OF DEPRESSION) DURING NEXT 168 HRS:**

24 HOURS	24-48 HOURS	48-72 HOURS	72-96 HOURS	96-120 HOURS	120-144 HOURS	144-168 HOURS
NIL	NIL	NIL	NIL	NIL	NIL	NIL

**\*NOTE: EVERY 24HR FORECAST IS VALID UPTO 0300 UTC (0830 IST) OF NEXT DAY**

**REMARKS:**

THE CENTRE OF LOW PRESSURE AREA IS AROUND 19.5N/87.0E OVER CENTRAL & ADJOINING NORTH BAY OF BENGAL AND ESTIMATED CENTRAL PRESSURE IS 1002 HPA NEAR CENTRE. A BUOY NEAR 17.7N/89.2E INDICATED MEAN SEA LEVEL PRESSURE OF 1002.2 HPA AND MSW OF 24<sup>0</sup>/6.7KT. ANOTHER BUOY NEAR 17.5N/89.1E INDICATED MEAN SEA LEVEL PRESSURE OF 1002.1 HPA AND MSW OF 17<sup>0</sup>/6.2KT.



**LPA: LOW PRESSURE AREA**

Cloud distribution: (a) Isolated: <25%, Scattered:25-50%, Broken: 51-75%, Solid:>75%, Convection Intensity: (a) Weak: Cloud Top Temperature (CTT) >-25°C, (b) Moderate: CTT: - 25°C to -40°C, (c) Intense: CTT: - 41°C to -70°C and (d) Very Intense: : Less than -70°C  
PROBABILITY OF CYCLOGENESIS (FORMATION OF DEPRESSION):NIL: 0%, LOW: 1-33%, , MOD: 34-66% AND HIGH: 67-100%  
This is a guidance Bulletin for WMO/ESCAP Panel Member countries. Visit respective National websites for Country specific Bulletins